



# RACE ROCK

## TxDOT-Approved One-Piece Sign Clamp for Triangular Slip Base Systems

Slides into position  
for easier installation

Two-bolt fastening system  
Same socket size, fewer tools

One-piece cast  
No welded components



# Texas Corrugators One-Piece Sign Clamp

## FEATURES & BENEFITS

- **One-piece cast clamp design** eliminates weld failure risk
- **Two-bolt fastening system** with the same socket size reduces tools, adjustments, and installation time
- **Slides into position easily** for faster, field-friendly installation
- **Wind-resistant**, keeps signage stable in demanding conditions
- **TxDOT tested and approved**
- **Made in the USA** for quality and compliance assurance

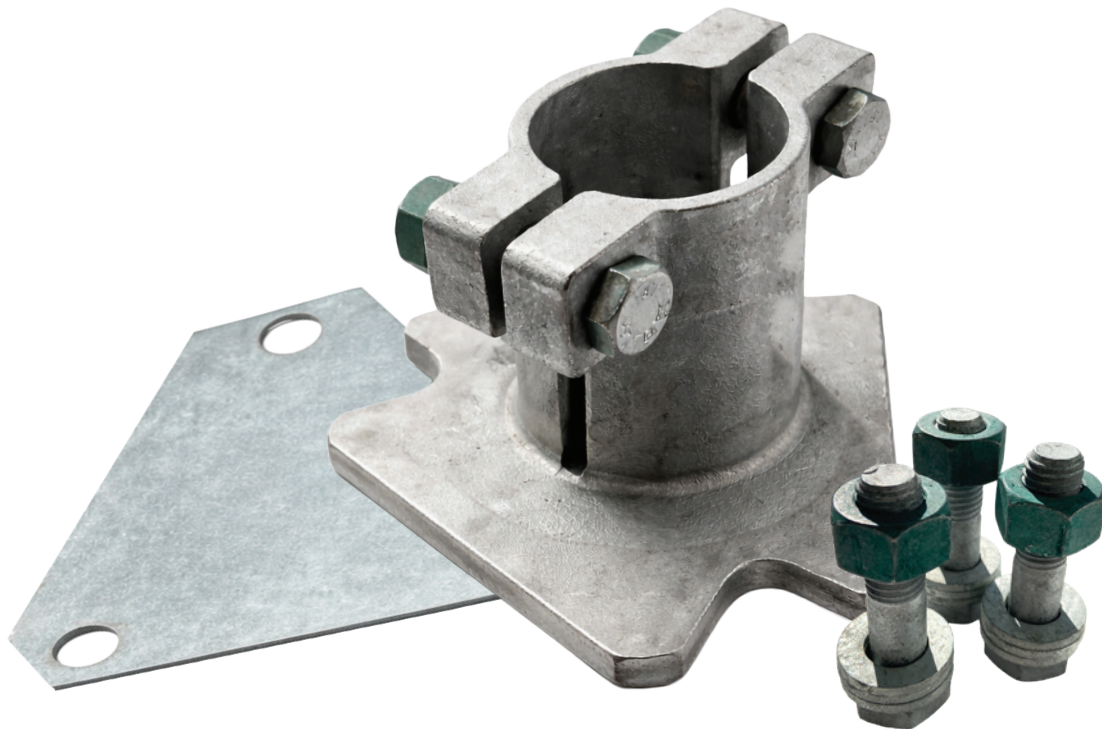
This TxDOT-approved one-piece sign clamp is designed for highway sign installations where durability, compliance, and ease of installation matter. Developed to replace older multi-piece and side-bolt clamp designs, it provides secure, wind-resistant performance in demanding field conditions.

The one-piece cast construction eliminates weld failure risk and reduces hardware, allowing the clamp to slide into place quickly with fewer tools and minimal adjustment. This simplified design helps subcontractors install faster, reduce rework, and pass inspection with confidence. The clamp is made in the USA and tested for Texas roadway conditions.

**APPLICATION** • Used in roadside and highway sign installations requiring secure, wind-resistant clamping and efficient field installation.

## PACKAGE CONTENTS

Items	Description	Qty
Fasteners	Bolts, nuts, and washers	5 sets
Clamp Body	One-piece cast sign clamp	1
Plate	Mounting plate	1



\*TxDOT approved as of December 2025.